

# SteamFast®

## Compact Digital Steam Press

### A faster, easier way than ironing

- Wide pressing surface and easy-to-use digital control panel
- Smooth wrinkles and create crisp creases
- Ideal for use on a variety of fabric materials
- Save time and money - avoid dry-cleaning with professional pressing at home
- Natural steam freshens fabrics without harsh chemicals

MODEL **SF-622**

**1500**  
WATTS  
POWER

**6 OZ.**  
(180 ML.)  
WATER  
CAPACITY

**185-428°F**  
(85-220°C)  
TEMPERATURE  
RANGE



**Top Innovations, Inc.**

**6655 Troost Ave., Kansas City, MO 64131**

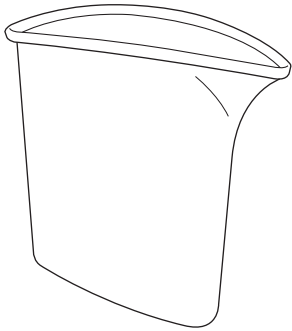
TEL: (816) 584-9700 / (800) 711-6617 • FAX: (816) 584-9066 • [www.SteamFast.com](http://www.SteamFast.com) / [sales@topinnovations.com](mailto:sales@topinnovations.com)

# SteamFast®

## Compact Digital Steam Press

MODEL SF-622

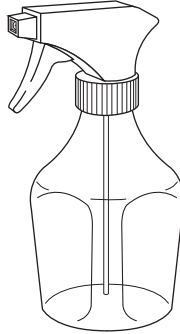
### 1 ACCESSORY INCLUDED



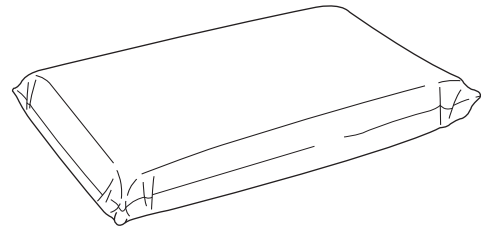
Measuring Cup

### 2 OPTIONAL ACCESSORIES

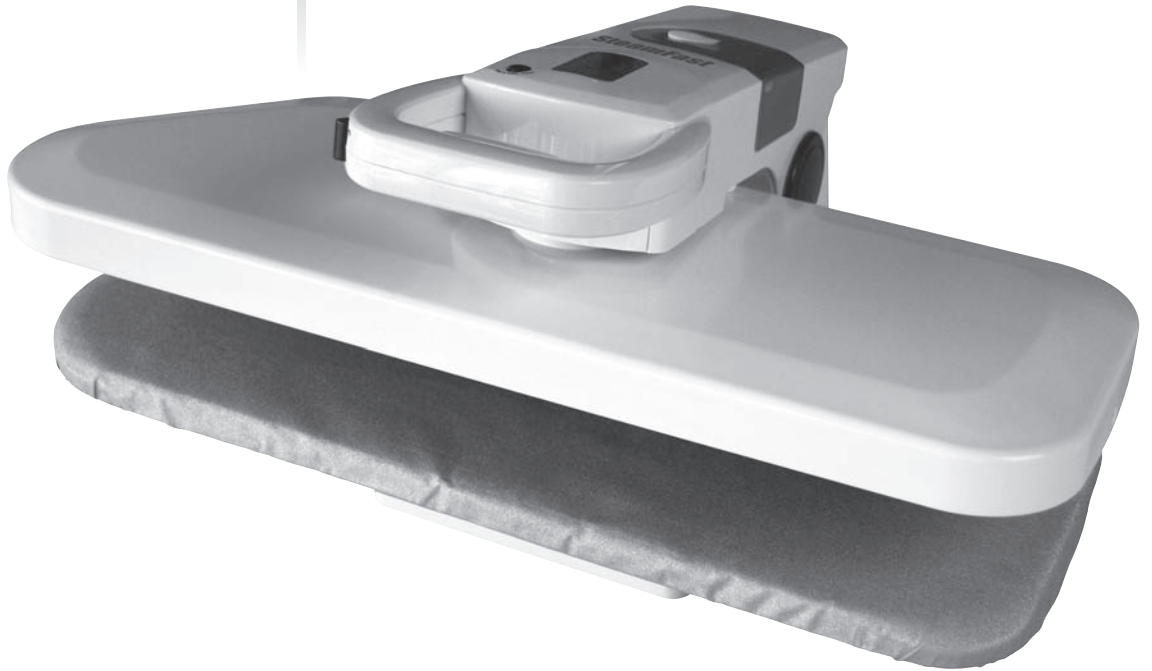
AVAILABLE FOR ORDER SEPERATELY



Spray Bottle



Pressing Cushion



MASTER CARTON	QUANTITY	UNIT INFORMATION	MISCELLANEOUS
Units Per MC 2	20' Container N/A	Unit Box Dim. (LxWxH) 22.75" x 14.25" x 8.25"	UPC# 0-47171-62200-6
Dimension (LxWxH) 23.50" x 18.75" x 16.00"	40' Container 1,000	Unit Box Weight 13.5 lbs.	ITF# 100-47171-62200-3
Gross Weight 29.7 lbs.	40' HQ Container 1,120	Unit Dim. (LxWxH) 21.50" x 14.25" x 8.25"	Drop Test Approved
Cube 4.08 cu. ft.	Pallet 40	Weight 11.0 lbs.	